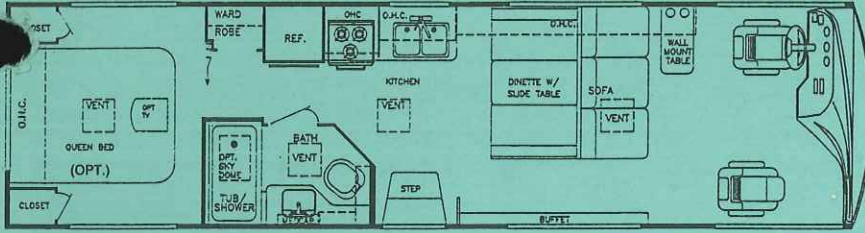


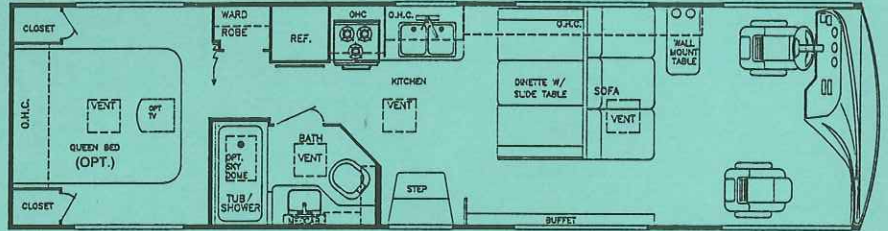
SUN STREAM XL

BY GULF STREAM

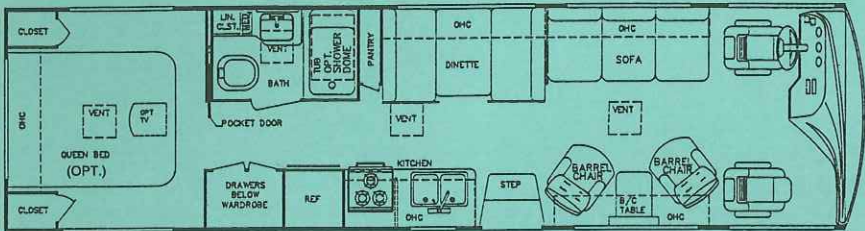
2194



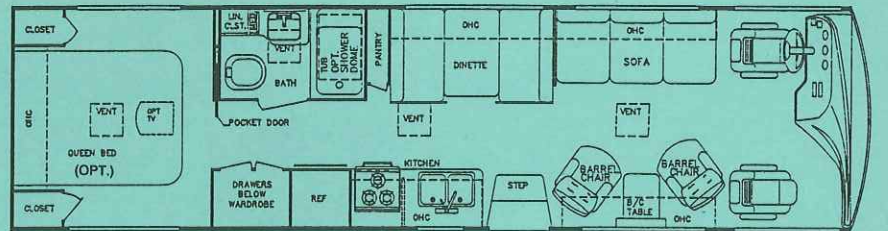
Model 8326 (Gas)



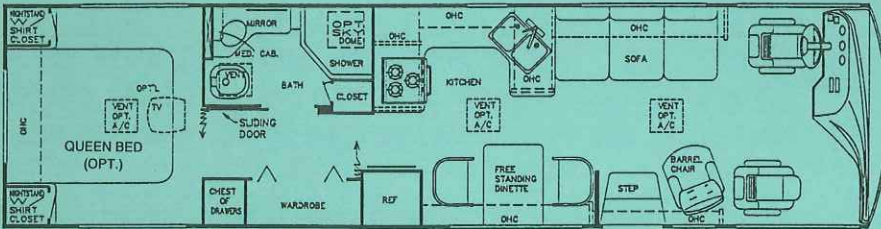
Model 8326 (Diesel)



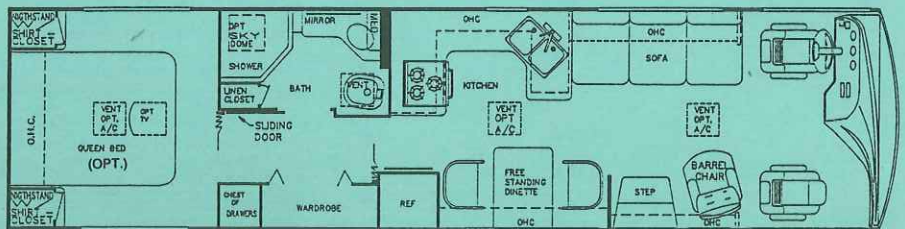
Model 8344 (Gas)



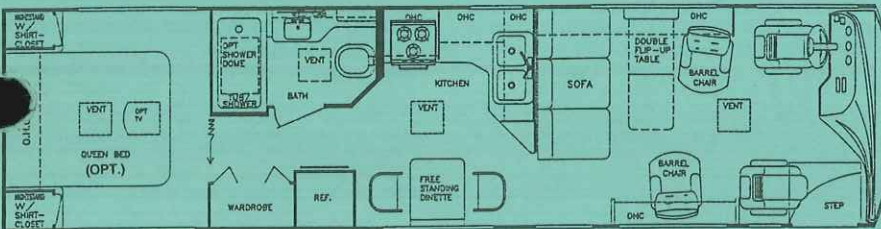
Model 8344 (Diesel)



Model 8349 (Gas)



Model 8349 (Diesel)



Model 8340 (Diesel)

SUN STREAM XL

BY GULF STREAM

Interior and Decor

- Natural Maple Cabinet Doors & Paneling
- Metal Drawer Guides w/Nylon Rollers
- Radius Cabinet & Wall Corners
- Windshield Privacy Drape
- Deluxe Furniture
- 3-Way Driver & Passenger Seats
- Deluxe Carpet W/Pad
- Coordinated Bedspread & Shams
- Lighted Closets
- Decorator Mirror
- Generous Overhead Storage
- Extra-Large Under-Bed Storage

Exterior and Construction

- Unified Steel Body Structure
- Radiused Laminated Rubber Roof w/Steel Rafters
- Low Profile Transition Radius Roof, Reinforced w/12-Gauge Truss-Styled Structure
- Automotive-Style Bumpers
- Electrically Actuated, Hinged Exterior Storage Doors
- Heated & Fully Enclosed Holding Tanks
- Super-Structure, Steel Truss-Type Floor System
- Laminated Floors w/Metal Under-Belly
- Laminated 1-1/2" Thick Floor & Wall Construction
- R-7.5 Block Foam Insulation Throughout
- Sidewalls Lag-bolted Every 8" to Floor Structure
- Fully Welded Steel Firewall
- Laminated Fiberglass Sidewalls
- Automotive-Styled New Exterior
- Awning Rail
- Extraordinary Exterior Storage
- Panoramic Windshield
- Tinted Windshield & Windows

Electrical Systems

- Easy-Access Dual Battery System
- 12-volt, 45-Amp Converter
- Electric Supply Cord
- Electric Overload Protection
- Generator Compartment
- Automotive-Type, Color-Coded Wiring
- Lighted Entry & Aisle Lights
- Directional Reading/Map Lights

Bath and Water

- Dual Holding Tanks - Approx. 90 Gal.
- Fresh Water Tank - Approx. 70 Gal. (50 Gal. on 8340)
- Demand Water System
- City Water Hook-Up
- Dbl. Stainless Steel Sink
- Sink Covers
- Tub/Shower Combination - Most Models
- Mirrored Medicine Cabinet
- Super-Flow Manifold Water Distribution System

Appliances

- 3-Burner High-Performance Range
- Lighted Power Range Hood
- Dbl. Door, 2-Way Refrigerator
- Large Microwave Oven

Heating & A/C

- Ducted Furnace w/Elect. Ignition - 35,000 BTU (Models: 8326, 8344)
- 40,000 BTU (Models: 8340, 8349)
- Pre-Wired for Ducted Roof A/C

Spec.'s

- Wheel Base:
 - Model 8326 - 190"
 - Model 8344 - 208"
 - Model 8349 - 208"
 - Model 8340 - 208"
- Exterior Length (approx.):
 - Model 8326 - 33'
 - Model 8344 - 34'
 - Model 8349 - 34'
 - Model 8340 - 34'
- Interior Height - approx. 6' - 8"
- Exterior Height - approx. 11' - 10" (w/A/C)
- Exterior Width - approx. 8' - 6"

Chassis (Gas Models)

- Super-Duty Ford w/460 V-8 Engine w/4-Speed Auto. Trans.
- Electronic Ignition
- Power Steering & Brakes
- High-Capacity Auto. Heater
- Tilt Steering Wheel

Chassis (Diesel Model)

- Spartan EC 2000, 18,000 lb. GVWR Chassis w/Cummins 6BT 5.9, 190HP @2500 RPM 475 ft.lb. Torque @1700 RPM Turbo-Charged Rear Mounted Diesel Engine
- 230 HP @ 2500 RPM, 605 ft. lb. Torque @ 1700 RPM, Turbo-Charged Rear Mounted Diesel Engine *Optional (w/6-Speed Allison World Transmission)*
- Allison AT-542 4-Speed Automatic Transmission
- Air Over Hydraulic 15" Dia. Front & Rear Disc Brakes w/Air Actuated, Spring-Applied Parking Brake

Deluxe Standard Features

- Exclusive Gulf Stream Special Handling Package
- Auto Dash Air Conditioner
- Auto Cruise Control
- Wheel Covers
- AM/FM Cassette w/4 Spkrs.
- Monitor Panel
- Auto. Emergency Start Switch
- Power Vent in Commode
- Converter w/Battery Charger
- Auxiliary Battery
- Generator Ready
- 115 lb. LP Tank (85 lb. on 8326)
- 19" Color TV in Front Overhead
- Carbon Monoxide Detector
- 6 Gal. DSI Water Heater

For further information and available floorplan options, contact your local dealer or Gulf Stream Coach, Inc. Gulf Stream Coach, Inc. reserves the right to make changes in prices, colors, materials, components and specifications and to discontinue models at any time without notice or obligation. Gulf Stream Coach, Inc. assumes no responsibility for any error in type or print reproduction of specifications or floorplans in this brochure.

TP 20M 2/94

© 1994 Gulf Stream Coach, Inc. - Nappanee, Indiana



Gulf Stream Coach, Inc. P.O. Box 1005 • Nappanee, IN 46550

Your Dealer